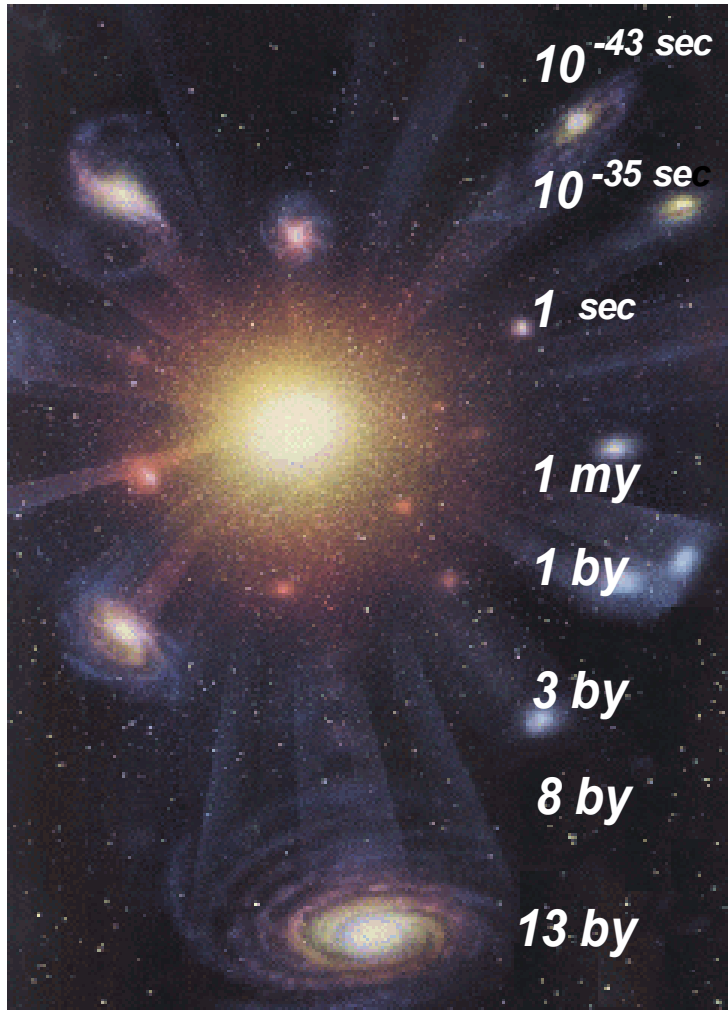


GALAXIES



Moon and Venus

Big Bang



gravity separates , inflation

strong force separates , inflation ends

***electromagnetism and weak separate
helium + others form***

***transparent, matter releases cosmic
protogalaxies***

Quasar and some radio galaxies

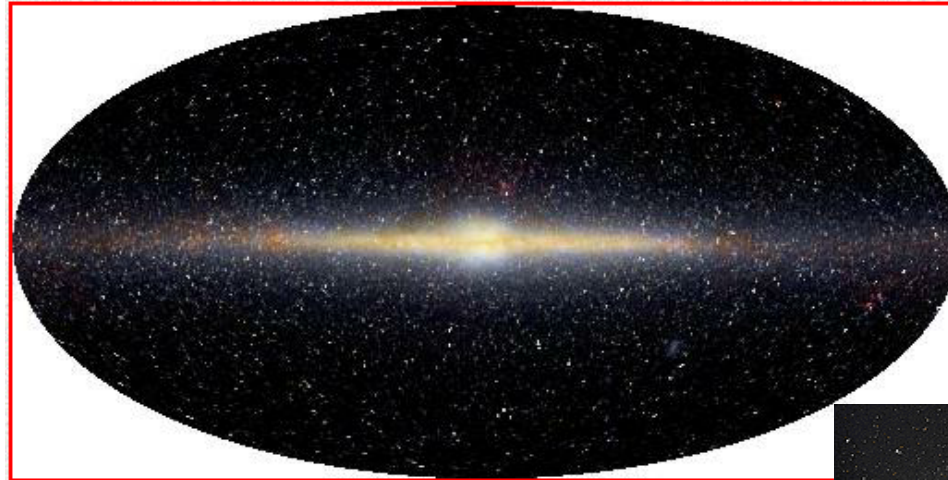
most galaxies form

Sun and planets form

MILKY WAY

young, intermediate stars

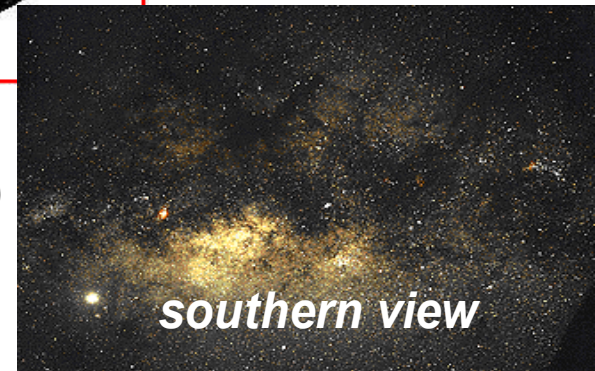
dark halo of unknown dark matter



bar older stars

spiral galaxy, spiral is site of star formation

COBE experiments (Cosmic Background Explorer)



southern view

GALAXY CLUSTERS

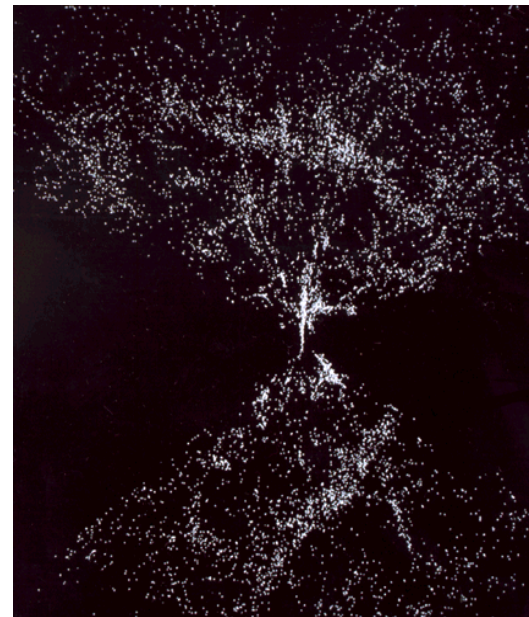
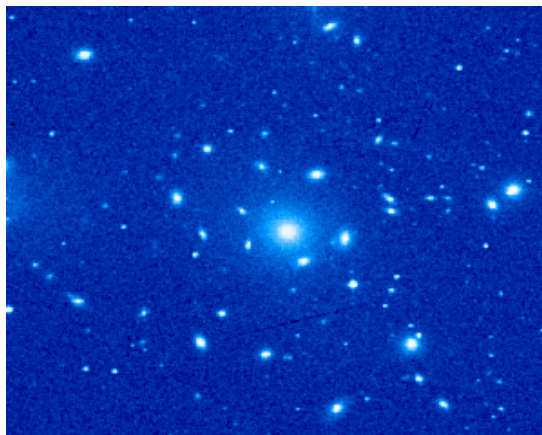


FORNAX, regular



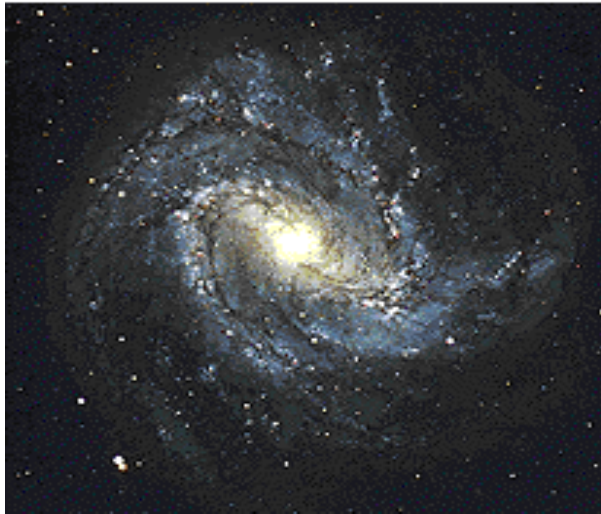
VIRGO, irregular cluster

COMA, regular



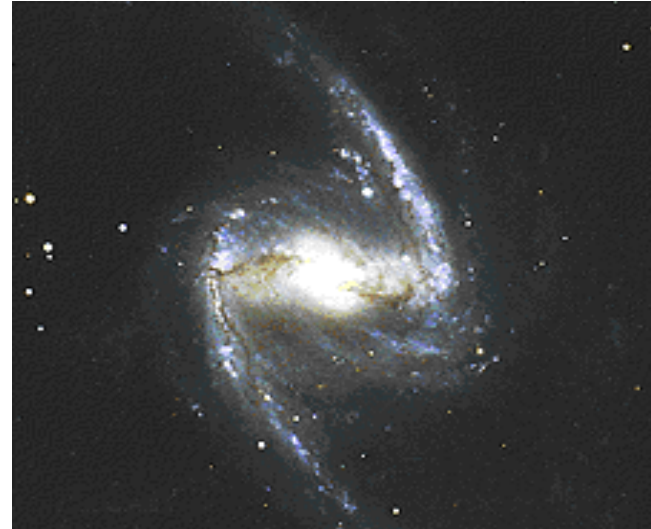
Great Wall galaxies

SPIRAL



M83 Spiral

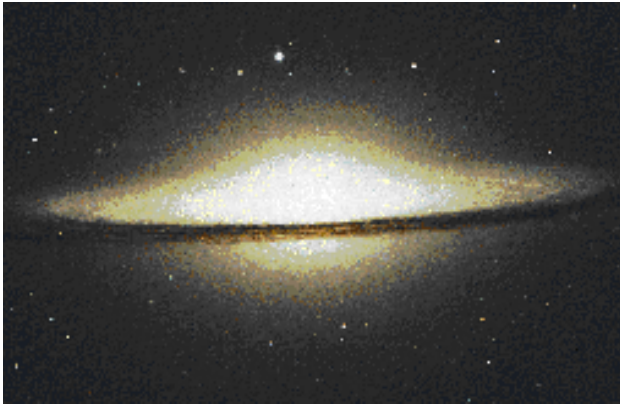
Normal Spiral



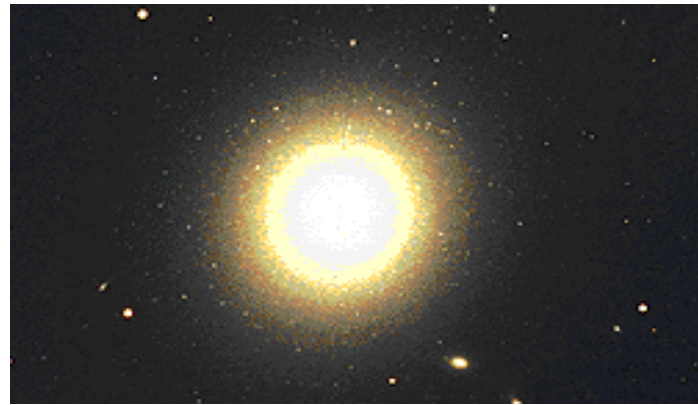
NGC1365

Barred Spiral

ELLIPTICAL



NGC1365



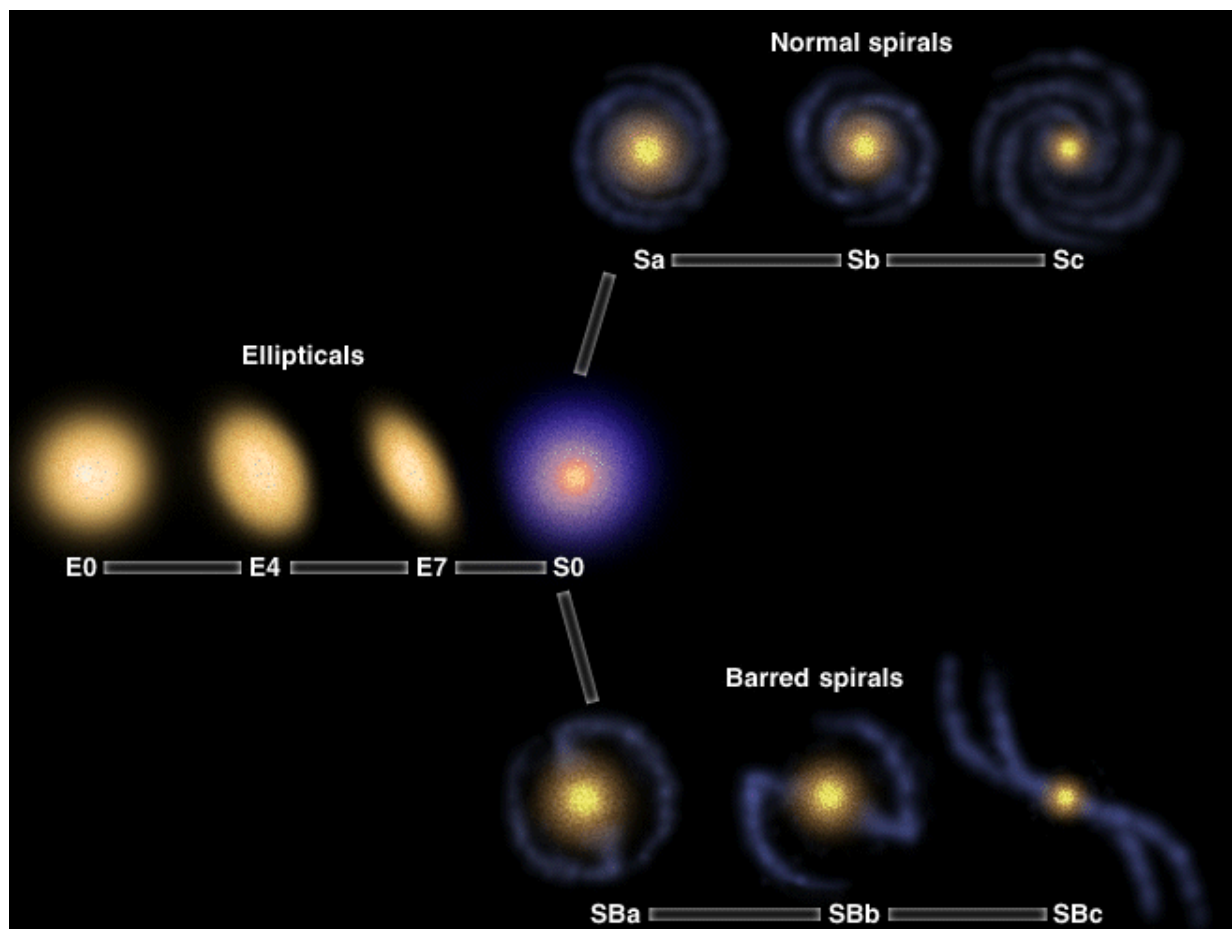
M87

IRREGULAR



Magellenic Cloud

Classification of Galaxies



WITHIN A GALAXY

Binary Star

Black Hole

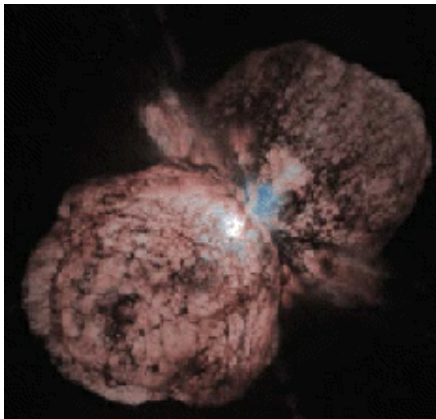
Globular Cluster

Nebula

Neutron Star

Pulsar

Supernova



Eta Carinae, a star is blowing itself apart before it becomes a Supernova



Crab Nebula

Star

a. White Dwarfs

b. Main Sequence

1. Solar System

i. planets

ii. comet

iii. asteroid

c. Giants

d. Supergiants