

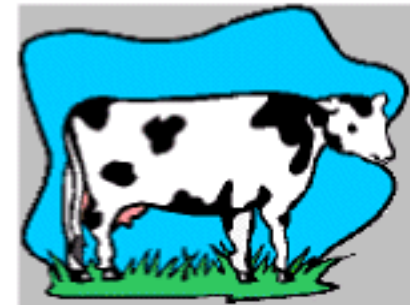
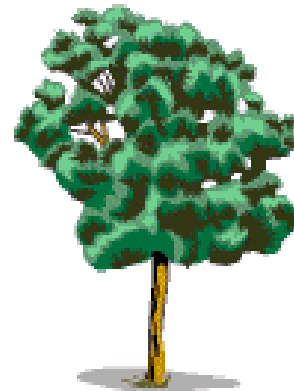
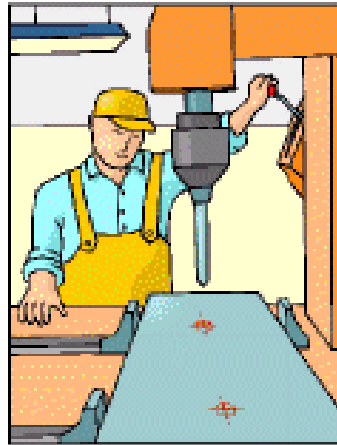
Built Environment



Human control over its environment

benign or harmful

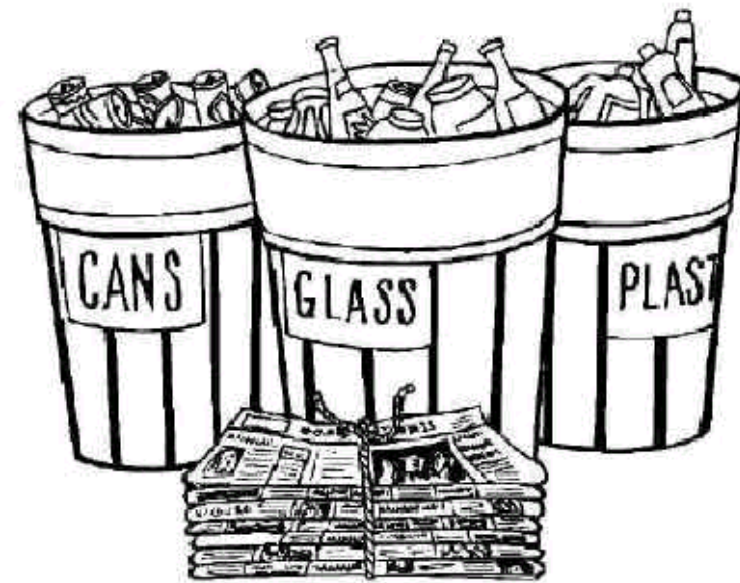
Natural versus Artificial



is one better than the other?

As we create new products, we have to think about discarding them.

WHAT IS SOLID WASTE?



Garbage - Can it be recycled?

We also have to think about other forms of pollution.... to humans and other organisms



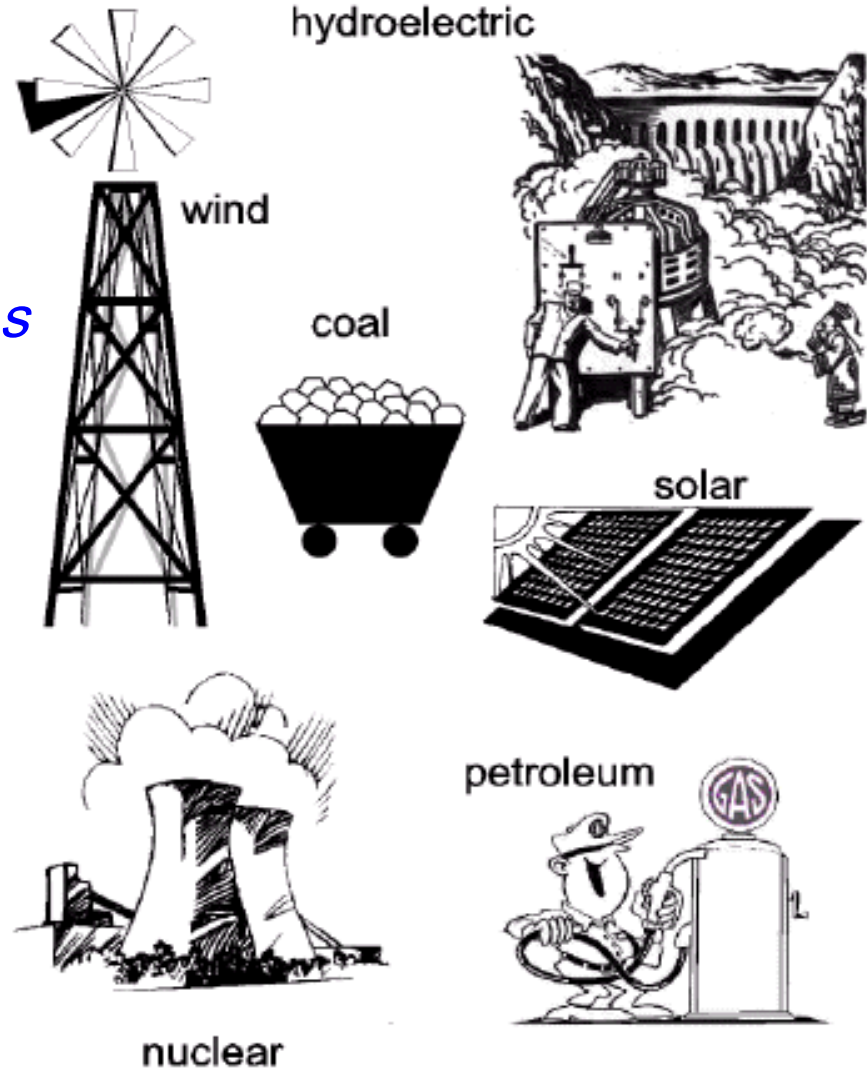
atmosphere, oceans, land

Sound Pollution

| | |
|-----------------------------|--------|
| jet airplane, 100 feet away | 140 db |
| air raid siren, nearby | 125 db |
| rock music, amplified | 120 db |
| riveter | 95 db |
| busy street traffic | 70 db |
| conversation in home | 65 db |
| quiet radio in home | 40 db |
| whisper | 10 db |
| rustle of leaves | 20 db |
| threshold of hearing | 0 db |

Creating Power

*Creating different types
of energy
can create different
types of problems*





Can we use nature to make products useful to humans?

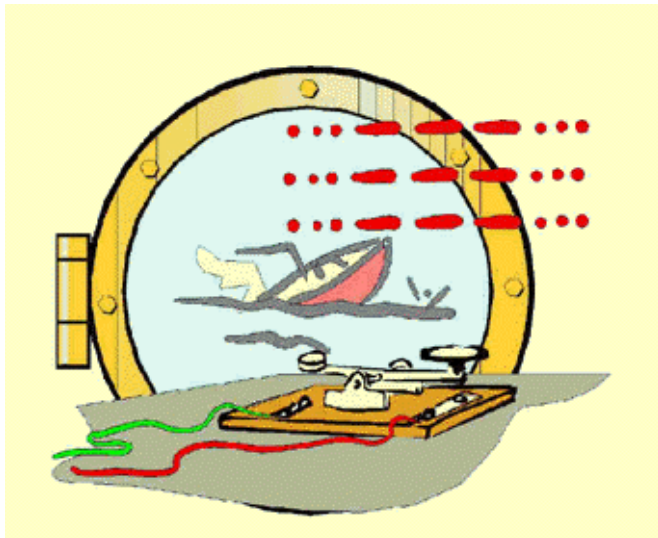


Can we built a better light bulb?

Thomas Edison

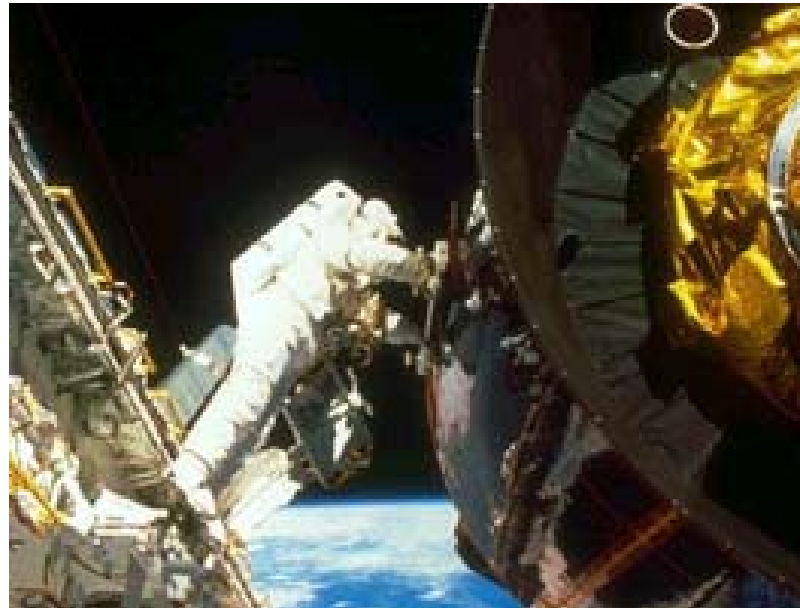


*Communication - changing the world through
information exchange*



fiber optics

Conquering Space



Can space create products?